

YEAR OF WEAVING

JULY 2021, UNIT WEAVES (SUMMER & WINTER ET AL.)





SUMMER AND WINTER TOWELS
4 BLOCKS ON 4 SHAFTS
WARP – 22/2 COTTOLIN, WHITE
PATTERN WEFT – 22/2 COTTOLIN, ONE
IN ROYAL, ONE IN AQUA
TABBY WEFT – 22/2 COTTOLIN, WHITE
ADDED AN EXTRA TREADLING UNIT
TO EACH BLOCK TO FORM
RECTANGLES RATHER THAN SQUARES

KATHY PERITO



WEAVE STRUCTURE: OVERSHOT
PILLOW COVER 1 – TREADLED STAR FASHION (TROMP
AS WRIT / AS DRAWN IN)
PILLOW COVER 2 – TREADLED ROSE FASHION (
BLOCK A TREADLED D, BLOCK D TREADLED A
BLOCK B TREADLED C, BLOCK C TREADLED B
WARP: 10/2 PERLE COTTON WHITE
GROUND WEFT: 10/2 PERLE COTTON SOFT YELLOW
(VALLEY YARNS AUTUMN BLONDE FROM MY STASH)
PATTERN WEFT: 2 STRANDS OF 10/2 PERLE COTTON. 1
STRAND LIGHT TEAL FROM STASH (SIMILAR TO
HALCYON CURRENT DUCK COLOR), 1 STRAND
TURQUOIS

EPI: 23

PPI: 37.5 PPI / 33 PPI

DEBBIE CUMMINGS



KITCHEN TOWELS

FINAL MEASUREMENTS: BLUE AND WHITE - 18" X 25"; RED, WHITE, AND BLUE - 18" X 20"

WOVEN ON 4-SHAFT LOOM IN PERLE COTTON

WARP AND TABBY: 10/2 PERLE COTTON IN NATURAL

WEFT: 5/2 PERLE COTTON IN SOLDIER BLUE

YARNS FROM YARN BARN OF KANSAS (RED FROM MY STASH)



JEANNE MARIE PEET



MARY BAIM

MONK'S BELT BENCH CUSHION COVER

WARP/TABBY WEFT:

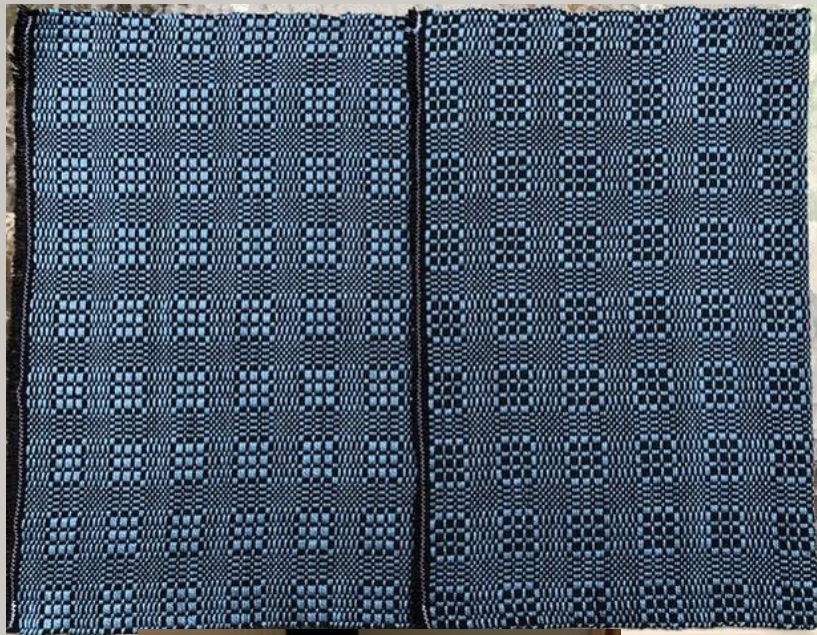
8/2 COTTOLIN - BLACK (BRASSARD-YARN BARN)

PATTERN WEFT:

3/2 PERLE COTTON - PARADISE BLUE (SUPREME UKI-YARN BARN)

EPI: 20

NOTES: PATTERN FROM THE ICELANDIC TEXTILE CENTER. 17.5" X 33.5". WILL BECOME THE TOP PIECE OF A LOOM BENCH CUSHION.



SUE ANNE SULLIVAN



STRUCTURE: TWILL
WARP AND WEFT: 8/2
UNMERCERIZED COTTON
FROM MY STASH
EPI: 24
PPI: NO IDEA. CAN NOT SEE
TO COUNT THEM

JANET ST LAWRENCE



OVERSHOT: FLORAL DANCE
DRAFT FROM DIXON, PAGE
112

EPI: 20

WARP: 8/2 COTTON

WEFT: 5/2 COTTON



JIM COLEMAN